

Spirit of California

The Entertainer

SPIRIT OF CALIFORNIA
ENTERTAINMENT GROUP, INC.

VOLUME 1, ISSUE 5

JANUARY 2015

SPECIAL POINTS OF INTEREST

- SOC management continues to evaluate financial offers from multiple investor / lender groups for the entertainment park development.
- Spirit of California's work with strategic partner's has brought additional attention to the Spirit of California Entertainment Park concept. Multiple cities have expressed interest in bringing our project to their regional community.

INSIDE THIS ISSUE:

- AECOM joins the Spirit of California management |
- ADOMANI, Inc. investment "UPDATE". |
- Entertainment Park "Tram System" |
- NEW NEWS: Fertilizer sales! |
- Resource Recovery Company "UPDATE" 2
- Inside Story 2
- COMING SOON: Hotel / Casino Design update

"Accelerated Progress"

AECOM joins Spirit of California consultant team

AECOM is an international planning, design and engineering company with extensive experience in creating leisure & cultural destinations and wastewater management. AECOM believes in the power of urban life and community. They recognize the extraordinary contribution that entertainment venues and resource recovery make to cities and the economic, social, and cultural value.



2012 London Olympics Masterplan

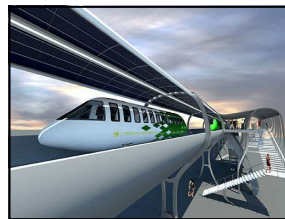
As a full-service firm operating in over 100 countries, AECOM is a progressive consultancy with more than 95,000 staff worldwide and 140 offices. Their collaborative approach unites creativity with technical expertise to address complex challenges at all scales. The best practice solutions achieve notable commercial and investment.



Blue Plains Wastewater Treatment Plant

AECOM, develops sustainable wastewater treatment systems to meet today's environmental challenges. They use an integrated and sustainable approach, which is essential to the effective management of wastewater systems.

Entertainment Park Tram System



ULTRALIGHT DIRECT-TO-DESTINATION RAIL

CyberTran is a unique passenger rail system that works more like an elevator than a traditional transit system. Rather than running on a defined schedule, a computer-controlled system responds to passenger needs in real time. Passengers input their destinations at a station, and after a small amount of time has passed, vehicles arrive to deliver the passengers directly to their destinations. Multiple small vehicles and off-line stations allow for this level of flexibility and responsiveness.

CyberTran vehicles are designed to carry a small group of passengers directly from one station to another. Holding approximately 20 people in a more luxurious atmosphere than the typical bus or subway car. This provides safe operating conditions at all times



ADOMANI, Inc. Investment Update:

(Spirit of California has a substantial shareholder investment in ADOMANI, Inc.)

ADOMANI, Inc. specializes in both new electric and repowering of existing school buses and commercial in town delivery vehicles.

ADOMANI holds two patents and has applied for six new patents for its technology.



ADOMANI electric school bus

The California Highway Patrol has approved ADOMANI's all-electric 50 passenger type-D school bus for the new school year. The Gilroy, CA School District placed the very first all electric school bus into daily operation in Sept. 2014.



ADOMANI electric bus motor

The company is in negotiations with multiple metropolitan school districts for potential orders and numerous other states are reviewing the availability to bring the buses to their school systems.

Each electric bus saves the school a minimum \$20,000 annually in operating expenses.

ADOMANI, Inc. has submitted its S1 filing in preparation for the IPO public offering in the first quarter of 2015.

California investors welcome:

Numerous California residents have become investors. We are able to extend the invitation for additional investor participation for a limited time. Minimum shareholder investments are available to qualified investors.

We invite you to inquire about how to become part of the synergy. Please contact James Rogers for a private presentation regarding this unique opportunity at jrogers@spiritofcalifornia.com

Spirit of California Entertainment Group, Inc.

Tel: 209-627-0190
email: info@spiritofcalifornia.com
www.spiritofcalifornia.com

Visiting Spirit of California will forever redefine the meaning of amusement park

We welcome you to the most exciting and innovative entertainment park in the country.

Spirit of California has developed a master planned ultimate entertainment park that includes a Theme Park, Boat Marina, Festival Park, Gaming Casino, Hotel / Convention Center, Golf Course, Motorsports Park, Movie Studio / Museum / Stage-Theater, Retail Shopping and Condominiums, RV Motorhome Park, Sports Park and Vintner Center.

The synergy of these entities will provide one of the most exciting entertainment parks in the country and will become a "World Renowned" destination point.



Subsidiary Companies & Project Progress

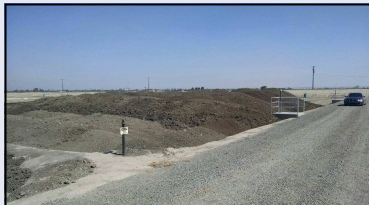
INSIDE STORY:

Pure Oil, Inc. and Spirit of California continue their research collaboration with team management and consultants towards Pure Oil, Inc. production and marketing assessments.

Pure Oil, Inc. shareholders control intellectual property for the production of algae based oil to be utilized in bio fuel, cosmetic oil, nutritional oil and pharmaceutical oils.

NEW NEWS:

Fertilizer Sales: Resource Recovery efforts result in first product sales agreement negotiations.



Resource Recovery Projects



Previously Reported:

Initial research & design studies were completed for Spirit of California to have it's own electrical power facility. We have continued with the next phases.

We have developed 2nd phase research studies for system design, market, regulatory, operational and financial feasibility based on regional farming & food processors methane & biomass.

We have met with local dairy farmers for system design parameters in utilizing their facility waste for Off Take Agreement and improvements to the dairy farms to include providing superior fertilizer for their crop production.

We toured the Tracy Waste Water Management Plant and made contact with the City's primary food processor bio waste inflow to the plant to develop superior management methodologies.

Update:

Spirit of California Resource Recovery is forming final agreements with a regionally located Central California Waste Water Treatment Plant (WWTP).

We have negotiations in process with several strategic international firms for consulting and / or Joint Venture Partnership arrangements to develop the multiple opportunities that exist within municipalities current WWTP designs. Technologies in these areas have developed and been rapidly perfected in test beds and application world wide.

The United States is 25 years behind in the application of available technology and strategies to utilize our resources in the development of electrical power, oils, bio fuels, feed and fertilizer bi-products.



Spirit of California's focus is to bring these technologies into application and production utilizing resources that are currently dormant throughout the state.

The Resource Recovery business opportunities developed in our projects are applicable in a multitude of communities within California.